



Northern portion of **Gettysburg**, from a position west of the **town**, near the Theological Seminary



Battle of Gettysburg - Engagement in the **Peach Orchard**



Battlefield of Gettysburg. **Culp's Hill**



Photo shows three Confederate prisoners on **Seminary Ridge**, on or about July 15, 1863, with the town of Gettysburg, Pa., in the background.



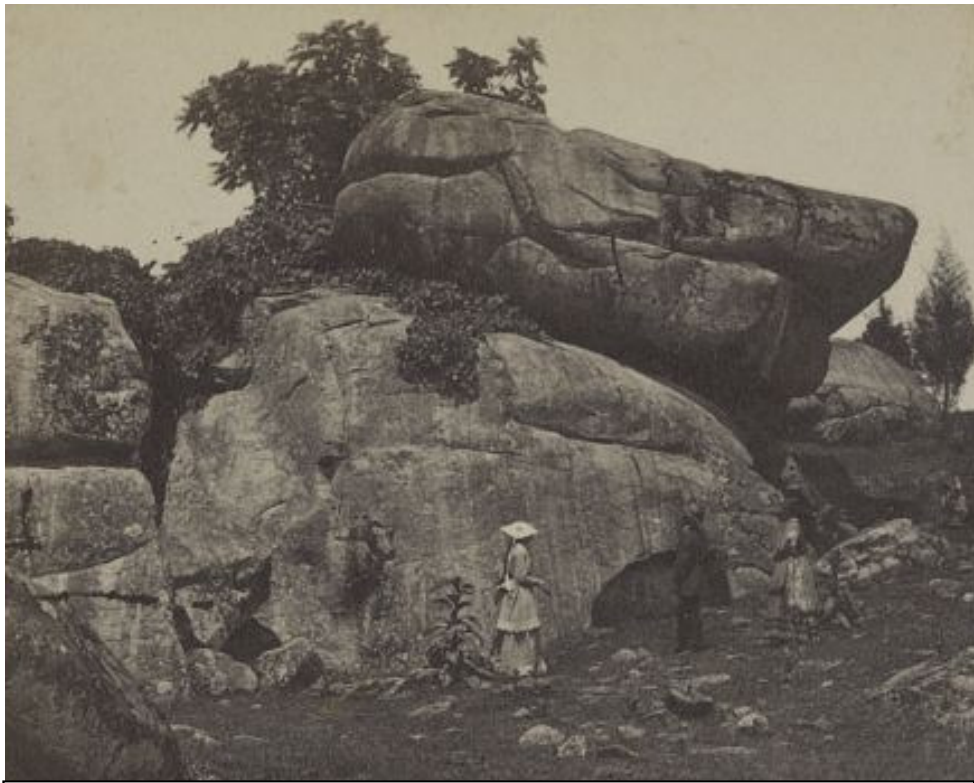
Little Round Top vista, Gettysburg National Military Park, Gettysburg, Pennsylvania



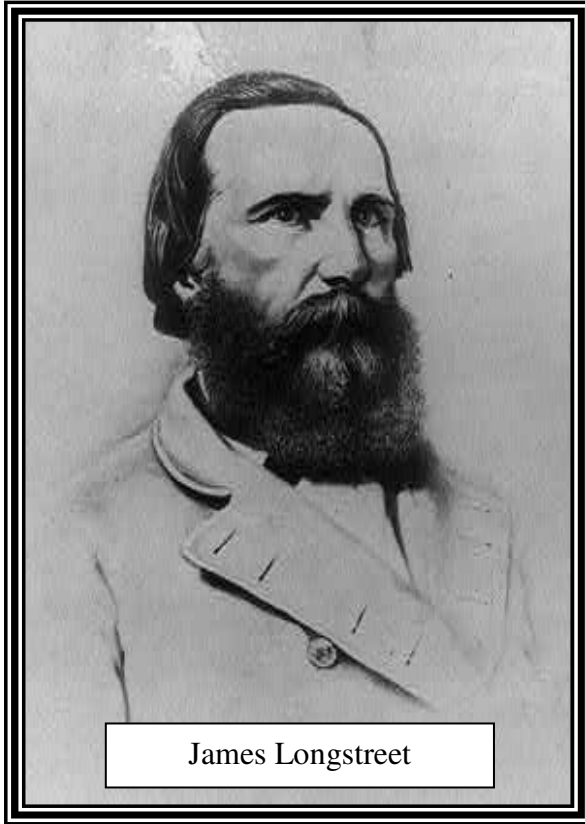
Gettysburg, Pa. Headquarters of Gen. George G. Meade on **Cemetery Ridge.**



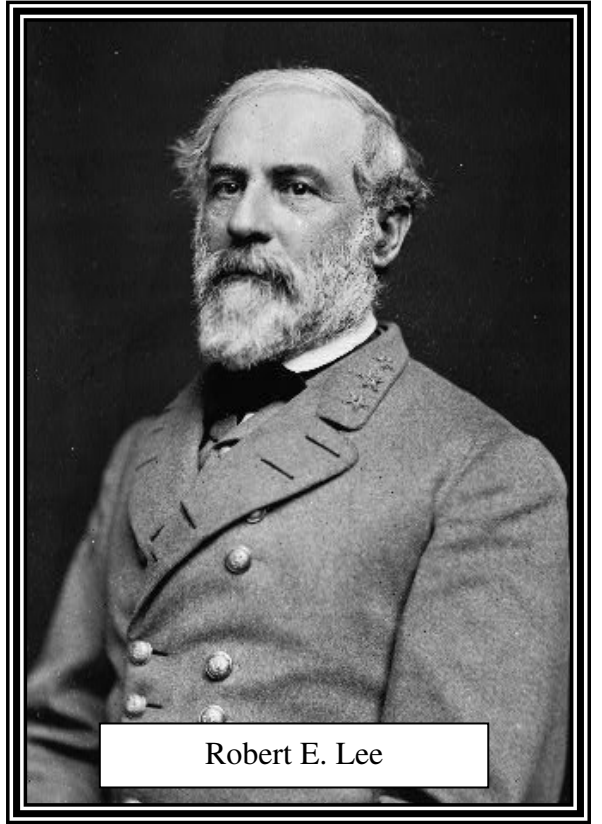
Gettysburg, Pa. July 1863. Battlefield of Gettysburg. Woods on left of Chambersburg Pike in which Archers Brigade was captured. (Also called the **Wheat Field**). Brady the photographer is shown.



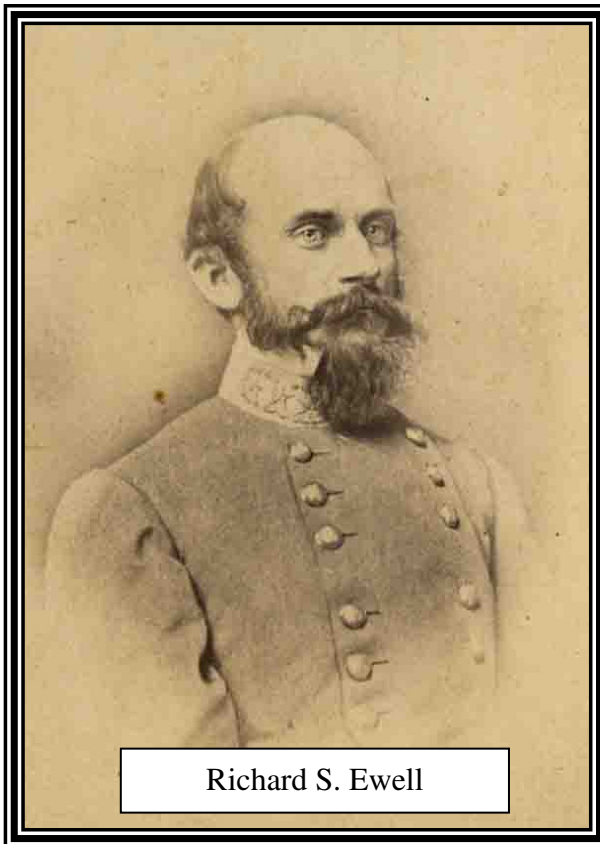
Devil's Den rock formations in Gettysburg, Pennsylvania.



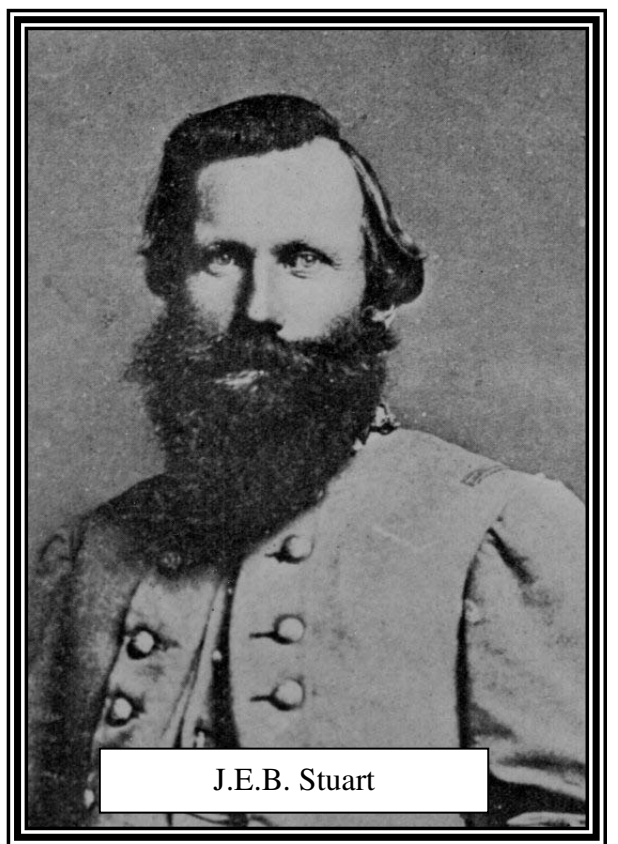
James Longstreet



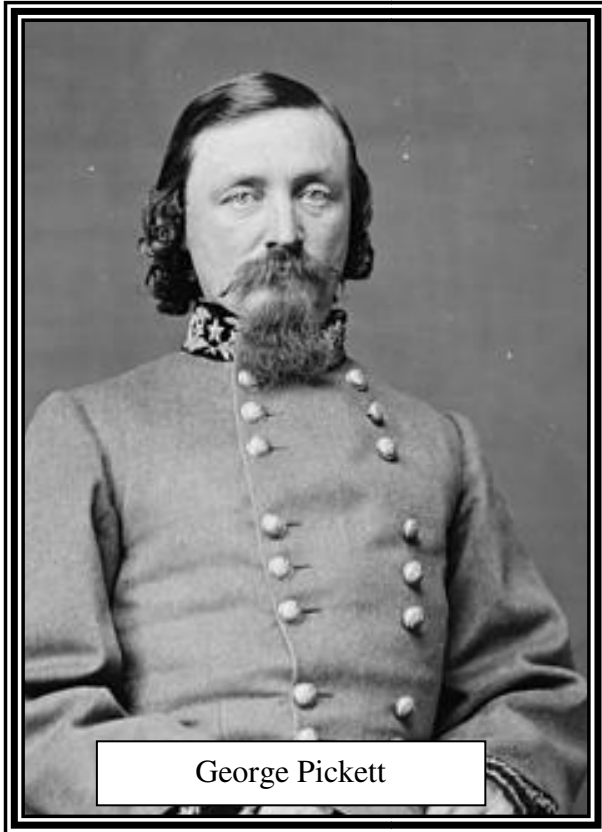
Robert E. Lee



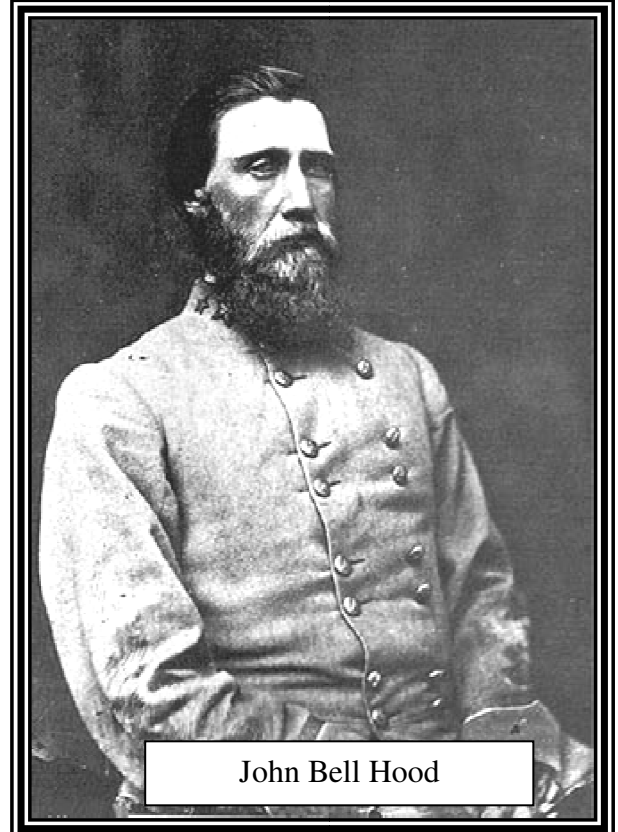
Richard S. Ewell



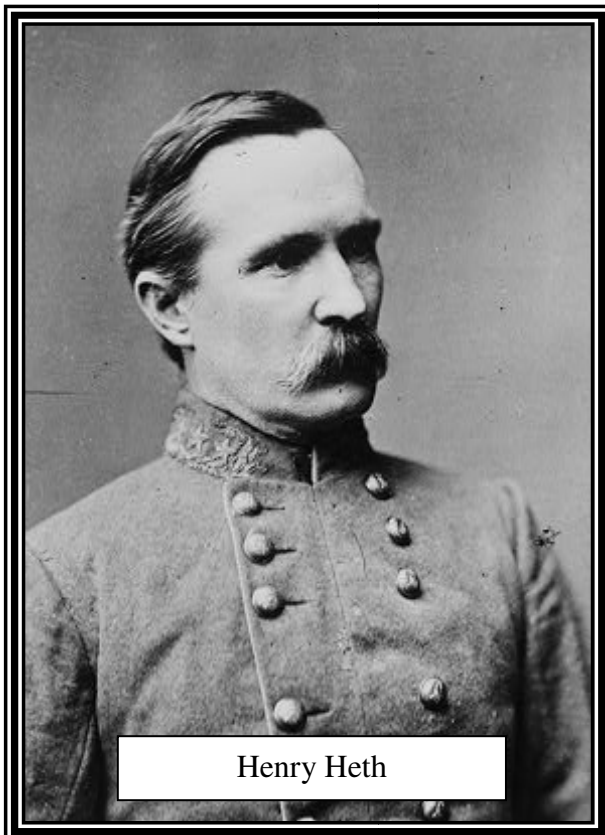
J.E.B. Stuart



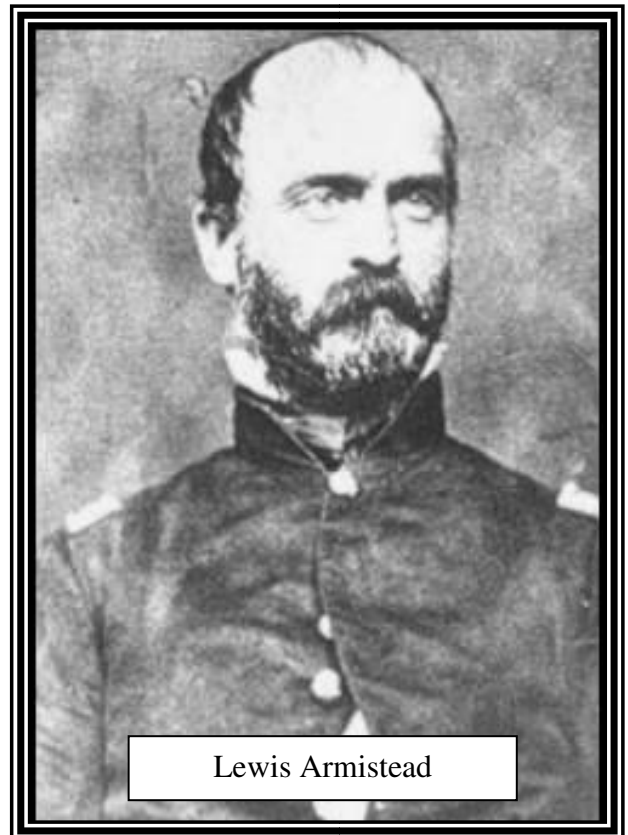
George Pickett



John Bell Hood



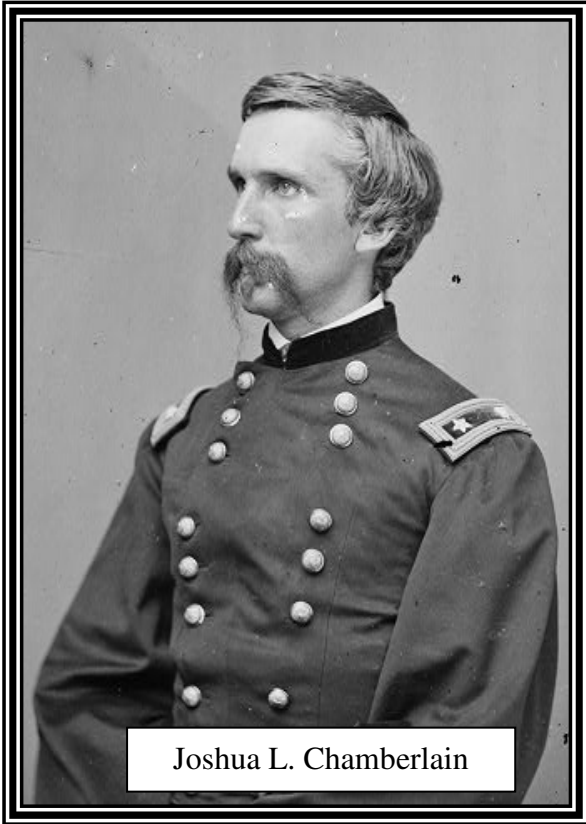
Henry Heth



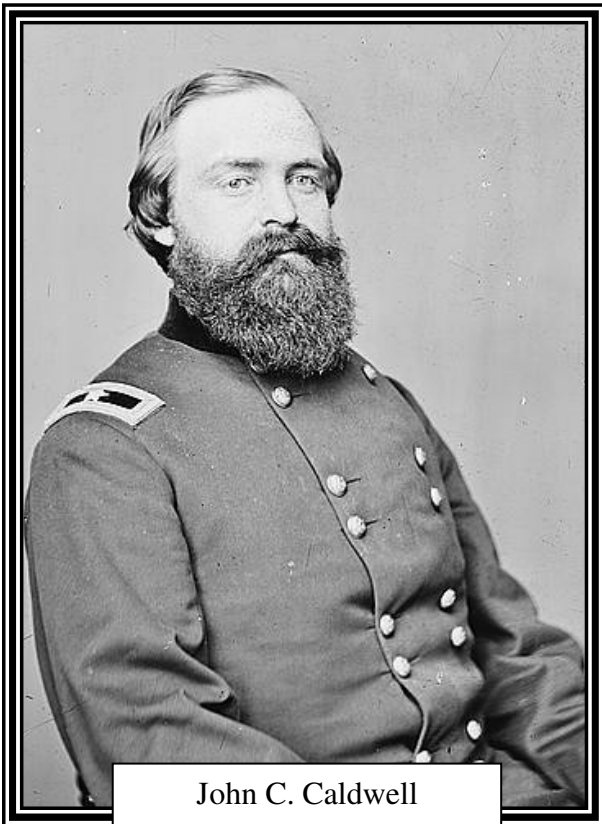
Lewis Armistead



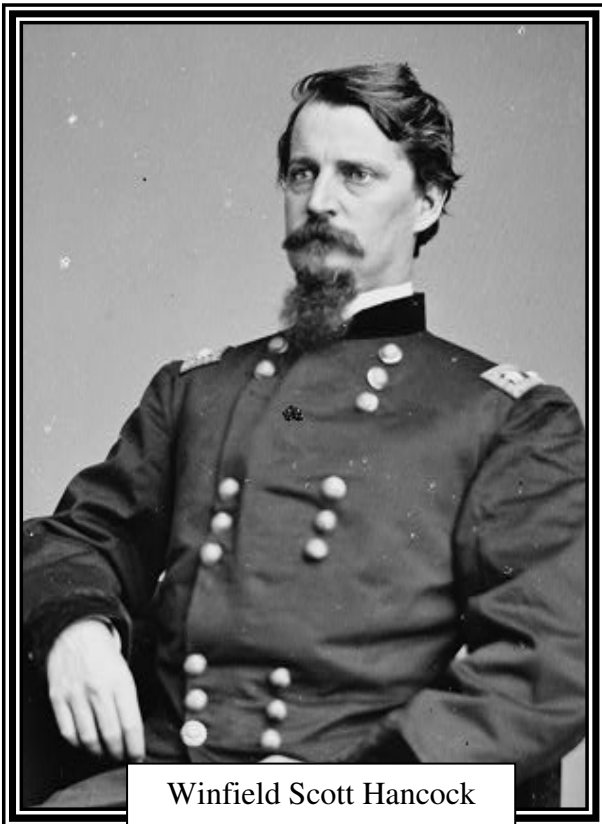
Daniel E. Sickles



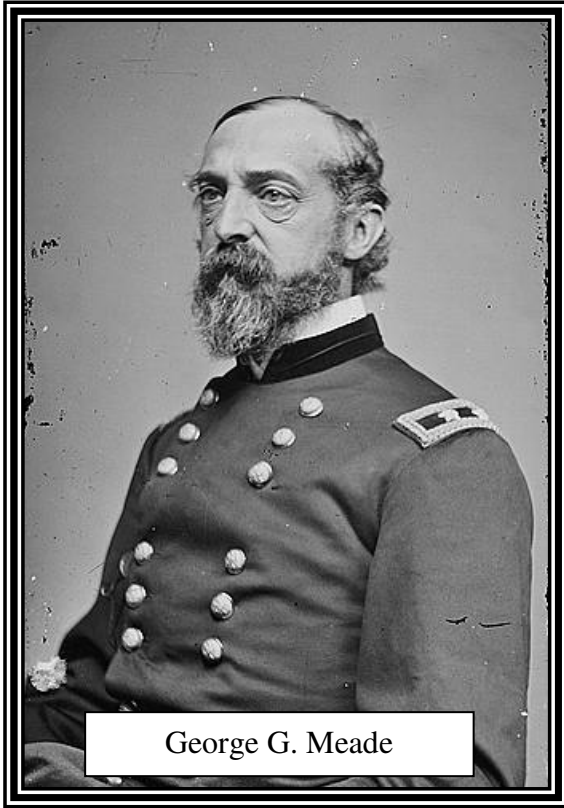
Joshua L. Chamberlain



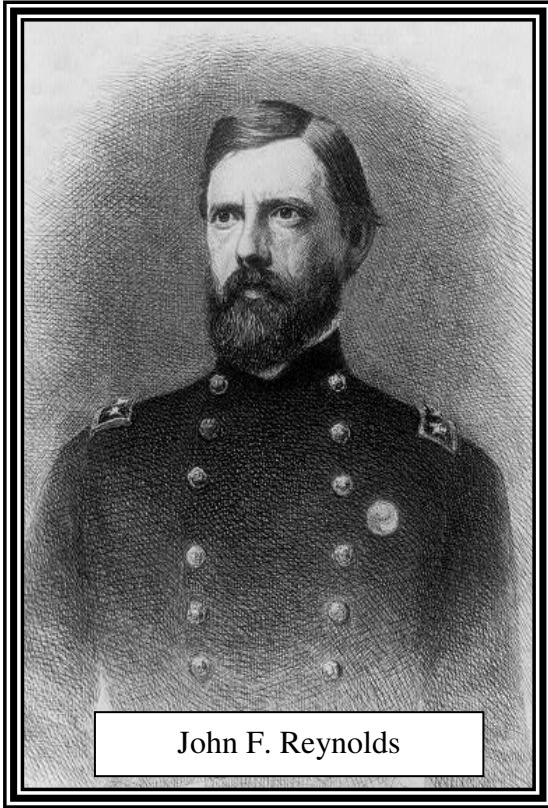
John C. Caldwell



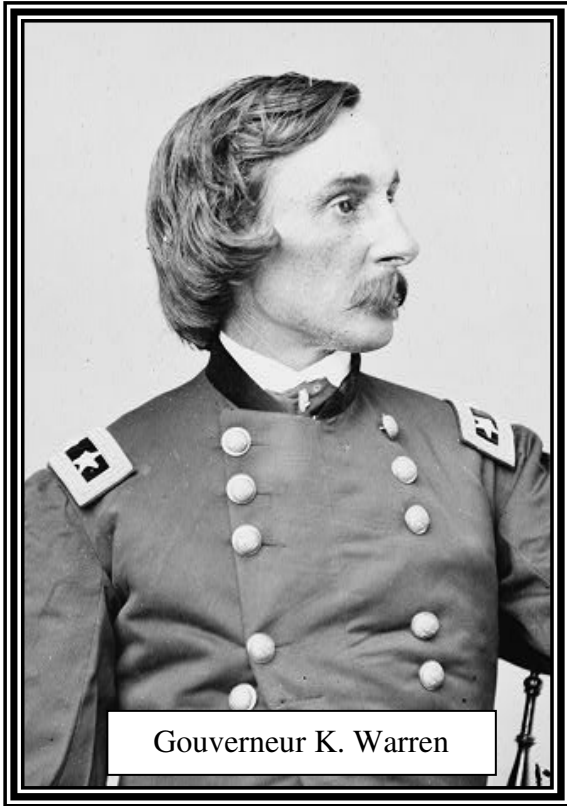
Winfield Scott Hancock



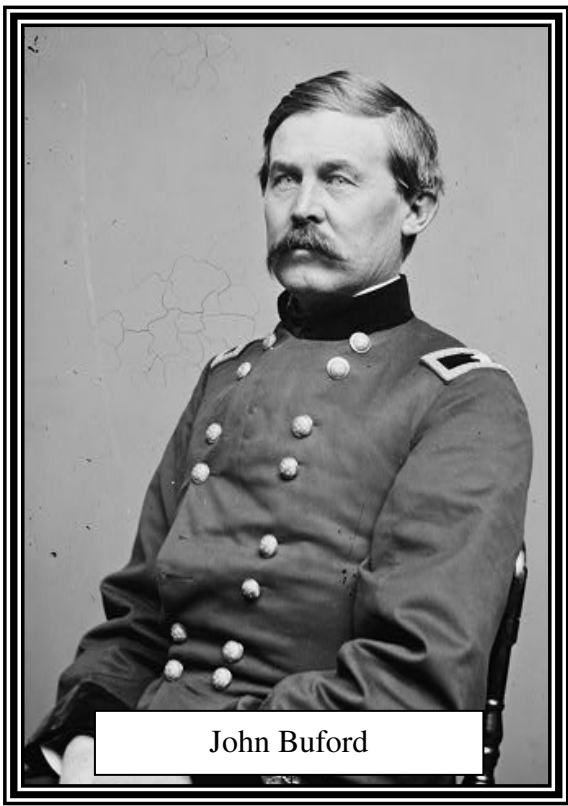
George G. Meade



John F. Reynolds



Gouverneur K. Warren



John Buford